

Relação do aço

AÇO	N	DIAM (mm)	QUANT	C.UNIT (cm)	C.TOTAL (cm)
4xP39					
VB3					
VB6					
VB9					
VB12					
VB15					
VB18					
VB21					
VB24					
VB4					
VB7					
VB10					
VB13					
VB16					
VB19					
VB22					
VB25					

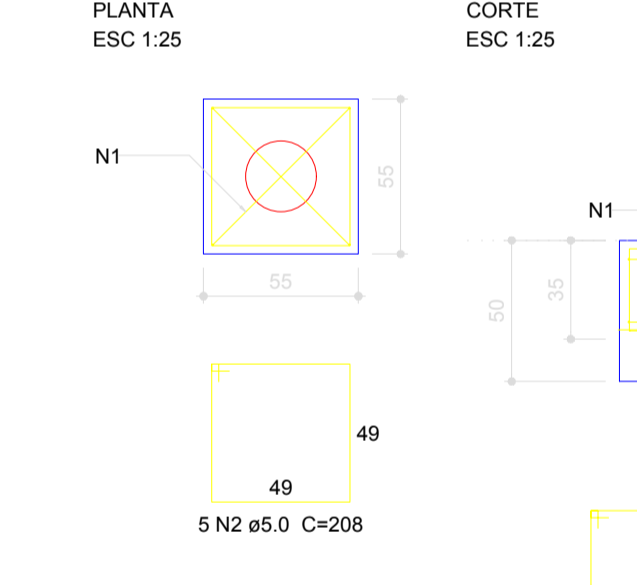
AÇO	N	DIAM (mm)	QUANT	C.UNIT (cm)	C.TOTAL (cm)
CA60	1	5.0	847	84	71148
	2	5.0	4	394	1576
	3	5.0	12	80	960
CA50	4	8.0	6	332	1992
	5	8.0	6	346	2076
	6	8.0	4	942	3768
	7	8.0	4	372	1488
	8	8.0	4	1198	4792
	9	8.0	4	196	784
	10	8.0	4	912	3648
	11	8.0	4	926	3704
	12	8.0	12	312	3744
	13	8.0	12	326	3912
	14	8.0	4	319	1276
	15	8.0	4	451	1804
	16	8.0	8	39	312
	17	8.0	8	957	7656
	18	8.0	8	971	7768
	19	8.0	2	227	454
	20	8.0	2	241	482
	21	8.0	10	402	4020
	22	8.0	4	416	1664
	23	8.0	2	452	904
	24	8.0	4	456	1824
	25	10.0	16	75	1200
	26	10.0	16	VAR	VAR

Resumo do aço

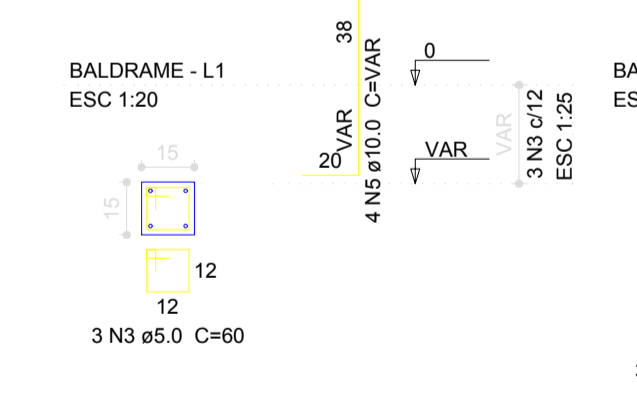
AÇO	DIAM (mm)	C.TOTAL (m)	PESO + 10% (kg)
CA50	8.0	580.8	252.1
	10.0	26.1	17.7
CA60	5.0	736.9	124.9
PESO TOTAL (kg)			
CA50		269.7	
CA60		124.9	

Volume de concreto (C-25) = 5.22 m³
 Área de forma = 104.5 m²

B1=B2=B3=B4=B5=B6=B7=B8=B9=B10=B11=B12
 =B13=B14=B15=B16=B17=B18=B19=B20=B21
 =B22=B23=B24=B25=B26=B27=B28=B29=B30
 =B31=B32=B33=B34=B35=B36=B37=B38=B39
 =B40=B41=B42
 1XC25
 PLANTA ESC 1:25 CORTE ESC 1:25



P1=P2=P3=P4=P5=P6=P7=P8=
 =P9=P10=P11=P12=P13=P14=
 =P15=P16=P17=P18=P19=
 =P20=P21=P22=P23=P24=
 =P25=P26=P27=P28=P29=
 =P30=P31=P32=P33=P34=
 =P35=P36=P37=P38
 P39=P40=P41=P42



Relação do aço

AÇO	N	DIAM (mm)	QUANT	C.UNIT (cm)	C.TOTAL (cm)
42x842					
38xP1					
4xP39					

Resumo do aço

AÇO	DIAM (mm)	C.TOTAL (m)	PESO + 10% (kg)
CA50	10.0	159.9	108.4
CA60	5.0	687.9	116.6
PESO TOTAL (kg)			
CA50		108.4	
CA60		116.6	

Volume de concreto (C-20) = 6.04 m³
 Volume de concreto (C-25) = 0.36 m³
 Área de forma = 55.3 m²